



HORSE PARK - HIDEAWAY -

LUXURY GLAMPING CABINS

Fern Cabin Information booklet





HELLO!!

Welcome to Horse Park Hideaway, thank you so much for booking your stay with us. We hope you have the most relaxing and enjoyable time. If you need anything at all please don't hesitate to ring or message.

We hope you found us ok, we know these country lanes can all look the same and it is easy to get lost, thank goodness for google maps!

We (Caroline and Josh) started building Horse Park Hideaway in 2019. We had this crazy idea of building a Glampsite years and years ago but were so sceptical that people would actually come so we put it off for so long. The idea came because we lived in a mobile home next door to HPH for 7 years from 2007. And we loved it!!! We loved living here, it was some of the best years of our lives and we wanted other people to be able to enjoy this space as much as we did. We started the planning process in 2018 and then we built Fern Cabin through the first 2020 Coronavirus lock down and Connie Cabin through the 3rd Lockdown in 2021, Blossom our newest cabin was built in 2022.

The glamping Cabin you are staying in was designed and built entirely by Josh and Caroline. Josh is a Joiner and a self taught jack of all trades. His passion for this business is amazing and has made the cabin into the beautiful place it is today! Caroline who has an eye for detail decorated and furnished the cabins creating the cosy and calm atmosphere that makes you never want to leave.

We hope you find everything you need and enjoy your stay...

CHECK IN AND CHECK OUT

You can check in after 3pm, please do not to arrive before this as we may still be in cleaning. You will be sent a message on the day of your arrival with your check in information and a time the cabin will be ready from if before 3pm. Please check out promptly at 10am and ensure the front door is locked on your departure and the key is placed in the letter box on the gate that. Thank You.



wifi - HorseParkHideAway
password - bookdirect

APPLIANCE INFORMATION

There are quite a few appliances in the cabin you may not have used before so here is a general guide to using them.

Front door The handle needs lifting up fully and the key turning while the handle is up to lock. The door can some times drop so the handle needs lifting up very high.

Kitchen

- Microwave - This is a Combi microwave / oven. The full oinstruction are at the back of the info booklet.
- Hob - induction hob needs pan on to be able to heat, hold your finger on the button to operate
- Fridge/Freezer
- Air conditioning unit comes on at a certain temperature. It can be quite noisy and if it disturbs you during the night you can turn it off in the boiler cupboard, please try and remember to turn back on in the morning to regulate the temperature.

Living area

- Log burner - pop the fire brick in to the log burner and light the paper to get the fire going, once alight add the larger logs, please only use 1 log at a time to avoid it being too hot! Do not burn anything other than the logs provided. The fire needs to be dampened down and extinguished before going to sleep or leaving the cabin. This is done by closing all the air vents located on the front of the burner. Only adults may use the burner.
- TV - Smart Tv with netflix etc
- Electric heater - can be found in the kitchen. Use the arrows to turn the temperature up and down. Use the on and off switch as and when required.

Bathroom

- Shower - just keep tinkering untill you find your desired temperature!
- Toilet and sink

EMERGENCY CONTACTS

Any Cabin related emergencies please ring either Caroline or Josh:

- Caroline- 07881305459
- Josh - 07557375782

Other Local emergency contacts:

- Medical - in an emergency please ring 999, or for non emergency medical advice please ring 111
- Dental - please ring 111 for emergency dental care
- Vets - Lanes Vets Garstang - 01995 603 349
- Local Police- in an emergency please ring 999, or call Lancaster Police station 01772 614444 for non emergencies

Please don't hesitate to ring Josh or Caroline if you require any further advice or information

OUTSIDE

- Hot tub- the hot tub is set to 38degrees, if you desire it warmer or cooler use the up and down arrows on the control pad. If the temperature does drop the only way to get it back up to 38 is to put the lid back on and leave for a while.

The next three buttons control the jets and the amount of bubbles, press these till you get the bubbles you want. The knob that twists has on/off marked on it this also controls the jets and turns them on and off. Please follow the safety procedures at all times which are displayed next to the hot tub.

Do not sit or stand on the cover!

- Fire Pit - please burn just wood in the fire pit and nothing else. Do not move fire pit!

You are welcome to use a disposable bbq in the fire pit. Please wait till fully cooled to dispose of the bbq.

- Umbrella- To open turn the dial until it is fully open. It move sin the wind to stop it from breaking but please close when not in use.



As we don't live on site, for security reasons we have installed a security camera that allows us to see the road leading to the cabins.

THE DOS

PLEASE RESPECT THE PEACEFUL, QUIET SURROUNDINGS YOU ARE STAYING IN.

Do...

- Use the designated parking space next to the cabin and for any additional cars please use the designated parking area.
- Keep noise to a minimum especially after 10pm, there aren't many neighbours but the sound travels in this beautiful open space
- Put all rubbish in the bins provided.
- Adhere to all signs that are in the cabin and around the grounds.
- Use all appliances as directed.
- Report all problems to Josh or Caroline as soon as possible.



PERFECT POCHES

In Fern cabin you are welcome to bring with you your dogs, or any other much loved (smaller than a shetland pony) pet that you cant leave home without. We ask that you please keep your pet under your supervision at all times while staying at the cabin and please don't leave the min the Cabin by themselves. The outdoor space outside the cabin is fully enclosed so they can't escape but please keep an eye on them. Dogs must be kept on a lead when not in the enclosed area at all times they must not go in to the field as it is a working field growing crops. Please pick up after your pet, you will find poo bags in the cabin and please put used bags in the outdoor bins behind the cabin. We do not charge for pets, but we ask that you leave a cleaning tip accordingly, Cleaning up after dogs is alot more work than humans (most of thetime).



LOCAL TRANSPORT INFORMATION

BUS

There is one local bus service:
The 89 Bus - Lancaster to Knott End via Royal Infirmary, the bus goes through Cockerham and Preesall and stops in Pilling at the Elletsons arms pub at the end of Garstang road, bus times can be found at -
<https://bustimes.org/services/89-lancaster-knott-end-3>

TAXI

Prestigetaxis - 01253 813000
Garstang cabs - 01995 601111
Russells cars - 01995 238181
Lancaster taxis - 01534 912323
Poulton cabs - 01253884500
Premier taxis Blackpool - 01253 401000

TRAIN

Poulton-le-Fylde station, Breck Road,
Poulton-le-Fylde, Lancashire, FY6 7AA
Moreinfoat <https://www.northernrailway.co.uk/stations/PFY>

Lancaster station, Meeting House Lane,
Lancaster, Lancashire, LA1 5NW
More info found at
<https://www.northernrailway.co.uk/stations/LAN>



LOCATION, LOCATION, LOCATION



Pilling is the largest parish in England. It has a small population but lots of land to explore. There is a local shop, pub and fish and chip takeaway. We are very rural and you will need some kind of vehicle to get around as there isn't many places to be able to walk to. We do have a few local walks you can explore from the amenity area which has views right across the bay and is a lovely place to picnic, to Pilling sands. Pilling Sands overlooks the River Lune estuary, at the southern end of Morecambe Bay. Beyond the grassy marsh, a vast area of wet sand is exposed at low tide which children enjoy jumping across!

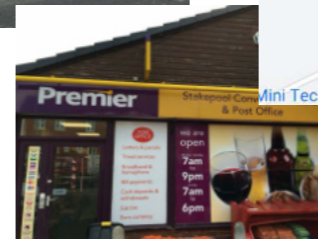
THE VILLAGE



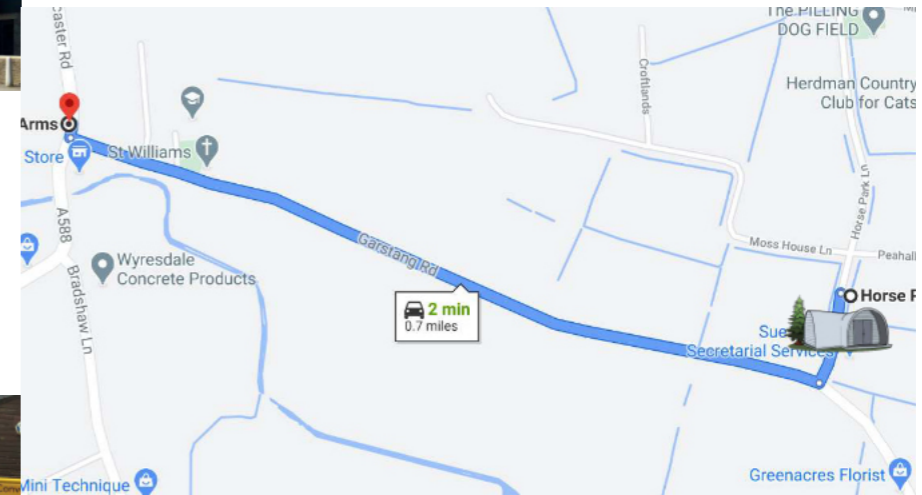
Elletsons Arms,
Country pub and restaurant
Phone: 01253 790333



Pilling Chippy
and the
Thai at Pilling
Phone:
01253
790333

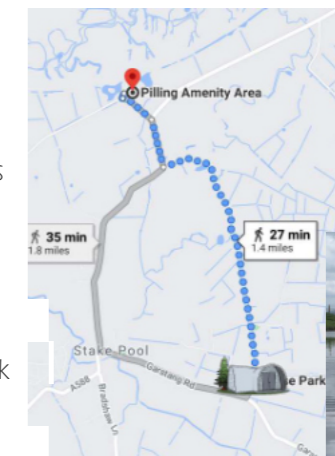
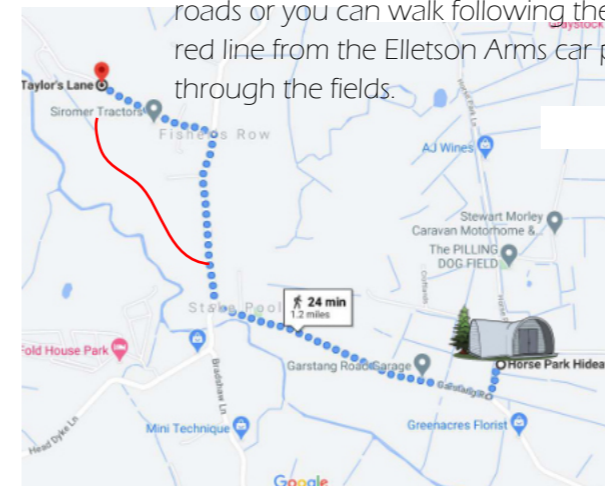


Stakepool
Convenience Store



Taylor's Lane Playing fields has a trail with wooden activities along it There is also a small play ground and. football fields.

You can get to it following the main roads or you can walk following the red line from the Elletson Arms car park through the fields.



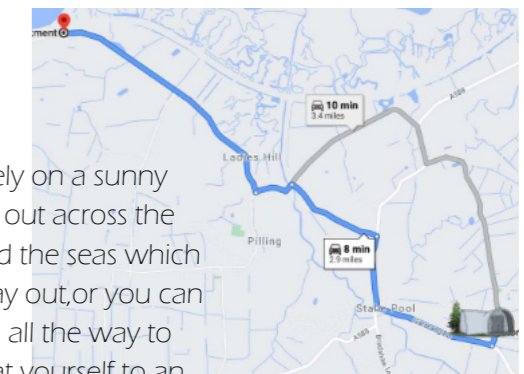
Lane Ends picnic and Amenity Area, The Amenity parking facilities for visitors who often stay to enjoy the views of the Lune Estuary and out to the Irish Sea.
Pilling Amenity Area, Backsands Lane, Pilling, Preston, PR3 6AH



LANCASHIRE

Lancashire is a wonderful place to visit!! There is something for everyone, with countryside, canals, coast and towns. Enjoy stunning views, quiet lanes, rare wild life and our famous Lancashire coastline. There is the unique, wildlife rich Morecambe Bay in the north to the flat and fertile Coastal plains around Ormskirk and the Ribble Estuary. The world-famous seaside town of Blackpool with its iconic Tower in the west to the undulating fells and moorland of the Forest of Bowland Area of Outstanding Natural Beauty and the famous Pendle Hill in the east, visitors to Lancashire are truly spoilt! head to <https://www.visitlancashire.com/> to found out whats on in the area!

Pilling Sands is lovely on a sunny day! You can walk out across the sand to try and find the seas which is usually along way out, or you can follow the sea wall all the way to Knott End and treat yourself to an ice cream!



Not too far...

Farm Yard Brew Co - Moss Edge Farm, Gulf Lane, Cockerham, Lancaster, Lancashire LA2 0ER This is a fantastic brewery only 10 minutes away! You can visit the tap room and enjoy some of the fantastic beer they brew! The first weekend of the month they usually have a fantastic live band! Its definitely a must visit! www.farmyardales.co.uk

Wallings Ice Cream - Garstang Rd, Lancaster LA2 0HA
The must visit on a hot sunny day but be prepared to queue, the ice cream really is that good!! They also have a cafe where you can buy delicious sweet treats such as waffles topped with their amazing ice cream!!
www.wallings.co.uk

Beacon Fell - Goosnargh, Preston, Lancashire, PR3 2NL
Beacon Fell is one of the oldest country parks in the country and a lovely walk for families and dogs. There is an abundance of wildlife including rabbits and hares. www.forestofbowland.com/green-guide/Bowland-Visitor-Centre-Beacon-Fell

Millenium Green - Garstang, Preston, PR3 1EB
A walk next to the river, perfect for picnics and letting the dogs have a run round. You can have a wander down Garstang High street too, there are some lovely little shops to browse. www.garstangmillenniumgreen.org.uk/

The Flower Bowl - Garstang Rd, Preston PR3 0BT
From curling to crazy golf, bowling to beverages, fish and chips to films, and golf simulators to great friends...The Flower Bowl's offering is endless! If ever a garden centre had the 'wow factor', then the gorgeous Barton Grange Garden Centre is it. The Riverside Café and Willows Restaurant serve anything from a quick coffee to a three course meal or traditional afternoon tea, so you can really make a day of it. www.theflowerbowl.uk
www.bartongrange.co.uk



Lancaster & Morecambe

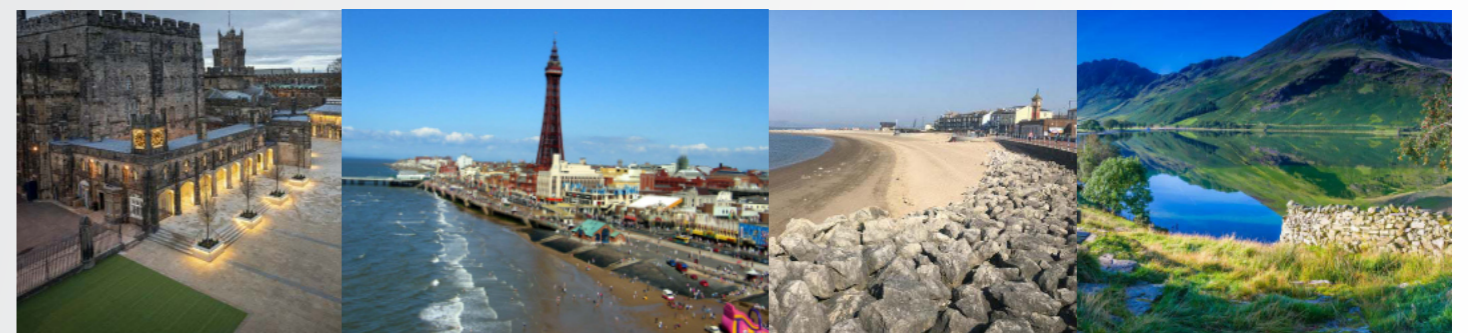
Lancaster is a wonderful historic city a short 20 minute drive away. In Lancaster you can explore the castle and priory, one of the many museums or head up to Williamsons park to one of the many events they put on, here is their whats on guide www.lancaster.gov.uk/sites/williamson-park. Lancaster also have many events to visit throughout the year which can be found at www.visitlancashire.com/explore/lancaster/whats-on
Morecambe Promenade is a lovely trip on a sunny day. And with the upcoming eden project Morecambe has much to offer.

Blackpool

Blackpool is amazing tourist destination and only a 30 minute drive away. You can have a day out herewith the family or get a taxi and have a night out. There is something to do here that would suit everyone from the pleasure beach theme park, Blackpool Tower, Sandcastles water park to the Blackpool illuminations seen by horse drawn carriage and the yearly firework display put on every Friday throughout September!
www.visitblackpool.com/things-to-do/events/

Lake District

Visiting the Lake District is just a 45 minute drive from Horse Park Hideaway. The Lake District National Park has a wide range of activities and attractions, as well as the natural beauty of the entire area. No matter how you want to enjoy the area, you can walk, cycle, swing in the trees and splash about here to your heart's content! With 12 of the largest lakes in England and 3,105 kilometres of rights of way, this is truly one of Britain's breathing spaces. www.lakedistrict.gov.uk/home



Local Walks

PILLING AMMENITY AREA

<https://goo.gl/maps/8SgLjwbJdbkhYA937>

The Amenity Area has two lakes and car parking facilities for visitors who often stay to enjoy the views of the Lune Estuary and out to the Irish Sea. You can either walk here from the cabins but be aware that there are no pavements or you can drive and park up. The walk around the amenity area is lovely, there are picnic benches to enjoy a picnic and most Sunday's an ice cream in the car park. You can get on to the sea wall from the far end of the amenity area and look out across the bay.



PILLING SANDS

<https://goo.gl/maps/OdfRwkyFBXXgs4No6>

Pilling Sands in an area of salt marsh – popular with bird watchers thanks to the wading birds that visit whilst they refuel and shelter over winter. It sits on an estuary overlooking the River Lune towards Morecambe Bay. Behind the beach there is a dedicated nature reserve and a section of the Lancashire Coastal Way passes nearby.

As you walk along the beach you will see remnants of gun emplacements within the sea wall. These are thought to date back to the Second World War. Pilling Sands is dog friendly year-round.

BEACON FELL - GOOSNARGH

<https://www.forestofbowland.com/green-guide/bowland-visitor-centre-beacon-fell>

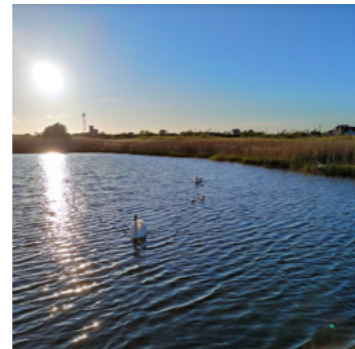
Beacon Fell is one of the oldest country parks in the country, being designated in 1970. The Country Park consists of 110 hectares of woodland, moorland and farmland. The summit is 266 metres above sea level and offers spectacular views of the Forest of Bowland AONB and Morecambe Bay. On a clear day it is even possible to see the Isle of Man. There is an abundance of wildlife including rabbits and hares. Roe deer are a little more elusive, but patience may well be rewarded!

NICKY NOOK - SCORTON

<https://wyresdalepark.co.uk/nicky-nook>

Nicky Nook, though modest in height, offers splendid views over Lancashire's coastal plain, Morecambe Bay and beyond to the Lakeland fells. On a really clear day it is possible to see the Isle of Man and the Great Orme on the North Wales coast. Birds such as meadow pipits and skylarks are common on the fell, while the more fortunate may catch a glimpse of tree pipits or yellowhammers.

An easy and popular walk from the centre of Scorton along the side of the reservoir and then over Nicky Nook with a return visit to a dog friendly Applestore cafe for a slice of cake.



WYRE ESTUARY COUNTRY PARK

https://www.visitlancashire.com/dbimgs/Wyre_Way_overview.pdf

The award winning Wyre Estuary Country Park offers year-round activities and events for all the family including ranger-led walks, environmentally themed activities and annual events like the Family Sculpture Day. An innovative children's play area provides children with a great opportunity to enjoy natural play and have fun in the park. Visitors to the park can also enjoy a walk along the network of accessible paths by the breathtaking Wyre Estuary. On a sunny day enjoy a picnic. We have selected some of the finest picnic spots for you, whether it's nearby while your little treasures explore or somewhere you can enjoy the view. If you want to bring your own picnic or BBQ, then please do, but remember to recycle as much of your rubbish as you can! With an exciting woodland and geology explorers trail there's an opportunity to discover the wildlife and learn about the native trees in the park's woodland setting.

MILLENNIUM GREEN GARSTANG

<http://www.garstangmillenniumgreen.org.uk/>

Established in 2000, the Millennium Green by the River Wyre in Garstang is a pleasant open space for use by all, owned by a charity and managed by volunteers. The land is secure and will never be developed.

Stunning views across the Bowland Fells and riverside walks. Space for gentle relaxation, walking, recreational and educational activities all associated with the countryside, but right here in Garstang.

Picnic area free from dogs with barbecue-friendly tables

LUNE ESTUARY, LANCASHIRE

<https://www.countryfile.com/go-outdoors/walks/lune-estuary-lancashire/>

Start at the The Stork Inn and join the Lancashire Coastal Way to Glasson, once a railway that linked to Lancaster. The dock thrives as a leisure marina while still catering for coasters and inshore fishing boats. It was built in 1787 to serve Lancaster, as the city's wharves and channel had silted up. In 1825, it was connected to the inland waterways network by a branch of the Lancaster Canal, allowing large ships to reach Lancaster.

Turn along Tithebarn Hill, topping out beyond the village edge and an immense panorama of marsh, bay and hills. Keep left, then go right from the sharp-left bend on to Marsh Lane and, beyond caravans, along a grassy field track to Crook Farm. Turn left along the lane here.

Fork right at Lighthouse Cottage, recalling a lighthouse built in 1847. The wooden-towered 16m (54ft) lighthouse, lit by paraffin lamps until 1947, was demolished in 1954.

Continue along the shoreline before veering left to the remains of Cockersand Abbey, founded in 1192. Walk through the derelict farmyard and along the access track to Moss Lane. Bear left, drinking in the wide horizons and the distant Bowland Fells. Keep right at the junction, remaining on Moss Lane to the left turn for Glasson Dock.

After 650m, take the waymarked gate right and walk the edge of two fields to a drainage ditch. Turn right; in 200m go left on the fenced track,

reaching a road beyond a gate and houses. Turn right for 80m, then left along a track beside Hill House. Beyond the pen, walk ahead to the canal bridge; drop to the towpath and turn right, canal to your left. At the bridge past The Mill, turn right to find The Stork Inn.



COCKERSAND ABBEY

This interesting circular walk crosses farmland and pasture before returning along the Lancashire Coastal Path to Glasson.

In particular, the coastal path is a changing environment, the high tides of Morecambe Bay change our view constantly as the tide ebbs and flows. It also creates a wonderful habitat for our wildlife; so there is a lot to see and admire.

But most important is the 'light', it's an artists and photographers dream; big skies and high reflecting surfaces, the light dances on this wonderful corner of Lancashire.

Not much remains today of the buildings of Cockersands Abbey, much of the stone was used in local buildings and the quay across the Lune at Sunderland. The Chapter House remains whilst a few ruined walls help us understand the context in which the community lived here, on this sometime's unforgiving coastline. They must have endured difficult conditions.

Plover Scar Lighthouse was built more than 150 years ago, it functions still, although the 'back light of two' was demolished when the lighthouse was automated. It marks the channel of the Lune, but imagine before it was built, there were over 100 merchant ships registered at Lancaster, this must have been a very busy shipping lane.

FOOD AND DRINK

TAKEAWAYS

Delivery -

Canton House - Chinese 01253 811222

Sabza - Indian - www.sabzaindian.com

Thai at Pilling - 01253 790333

Carlitos - 01253 812336

Wyre Pizza and Kebabs - 01253 700666 wyrepizzaandkebabhouse.com

Short Drive -

Pilling Fish and Chip Shop + Pizzas -

2 minute drive at the Elletsons Arms - 01253 720468

A few of our favourite restaurants...

THE APPLE STORE AT WYRESDALE PARK

Dog friendly

Boasting a full cafe-menu of overstuffed sandwiches, hearty homemade soups and scrumptious cakes.

All ingredients are locally sourced and freshly prepared. Meats are from Honeywells, cheese from Dewlay and Milk from Shepherds Dairy. Cakes are from the Lady of The Manors Kitchens & occasionally from Lathams. Bread is from Berry Lane Bakery.

For enquiries and bookings call 01524 791011 or alternatively you can email whewellsally@hotmail.com

THE ROYAL OAK

Dog Friendly

The Royal Oak Hotel set within the historic market town of Garstang, is a traditional family run hotel, located only a stone's throw from all of Lancashire's best attractions.

We pride ourselves on fantastic customer service and making sure your visit to us, is one to remember.

Being family run, we pride ourselves on always being there to serve our customers and whether you're a regular guest or someone who is visiting us for the first time, you are all very important to us and our team.

TWELVE

Currently celebrating 21 years of business Twelve is owned by husband and wife team Paul Moss and Caroline Upton who still run the restaurant hands on with their team of friendly and efficient staff.

Twelve offsets its trusty menu of local and seasonal British dishes with its edgy urbane décor and cool cocktail bar. Exposed girders reclaimed wood and bare brick fill the dining room, along with graffiti artwork all creating a uniquely inspired vibe in this busy neighbourhood restaurant.

Head Chef Graham Floyd and his team of chefs are proud to boast a Michelin Bib Gourmand and 2 AA rosettes which have been retained annually since 2006 along with numerous local awards.

THE CARTFORD INN

Our Menu is an expression of Lancashire's food culture and a showcase of the region's best produce. We use local and seasonal ingredients wherever possible, prepared sensitively and skilfully by our dedicated team of chefs led by Chris Bury. This includes seafood from Fleetwood docks, meat from nearby farms and seasonal, locally shot game. Alongside favourite British dishes, you'll find more innovative flavours, as well as a discernible proprietary French influence.

Horse Box Shop

The Horse Box Shop stocks essential items for your stay. It is an honesty card only shop. Please use the card machine according to the instructions.

Price list

Fridge Milk	£1.50	Granola	£	Fire Bricks	£2.50
Orange Juice	£1.00	Bread	£1.20	Dog Food	£
Sauce Sachets	£0.10	Dorritos	£1.00	Dog Treats	£
Bottles	£1.00	Harribos	£1.00	HPH Merch	
Corn	£2.50	Popcorn	£1.00	Hats	£8.00
Freezer		Marshmallows	£2.00	Mug	£4.00
Breakfast meats	£4.00	Smores Kits	£3.00	Pen	£1.50
BBO Meats	£4.00	Chocolate Bars	£0.80	Dressing Gown	£35.00
Ice	£2.00	Tampons	£1.25	Towel	£15.00
Ice Cream	£	Sanitary Towels	£2.00	Essentials including Toilet Roll, Kitchen Roll, Matches, dog poo bags and Bin bags are available in the shop free of charge, these are to use whilst at the cabins, Don't stock up to take home!	
Hot Chocolate	£0.50	Toothbrush	£1.50		
Latte	£0.50	Tooth Paste	£3.00		
Beans	£1.50	Deodorant	£3.50		
Plum Tomatoes	£1.00	Bobbles	£		
Jam	£0.50	Face Masks	£1.25		
Marmalade	£0.50	Razor	£1.00		
Nutella	£0.75	Magic Towel	£0.25		
Cereal Box		Wood	£5.00		
		Disposable BBOs	£4.00		

Local Shops

Premier Store, Elletson Arms, Stakepool Dr, Preston PR3 6BU
- 3 minute drive - 13 minute walk -

Co-op Food - Preesall - Sandy Lane, Sandy Ln, Preesall, Poulton-le-Fylde FY6 0EJ
- 10 minute drive -

SuperMarkets

Booths, Garstang, Cherestanc Square, Park Hill Rd, Garstang, Preston PR3 1EF
- 13 minute drive -

ALDI, Moss Ln, Garstang, Preston PR3 1HB
- 13 minute drive -

Sainsbury's, Park Hill Rd, Garstang, Preston PR3 1EL
- 14 minute Drive -



Shower With Soap & Water Before You Enter The Hot Tub



Senior Adults Must Consult A Doctor Before Use Of The Hot Tub



Anyone With Heart Disease, Diabetes High Or Low Blood Pressure Or Any Serious illness Must Consult A Doctor



Pregnant Woman Must Consult A Doctor Before Use Of The Hot Tub



Children Under The Age Of 5 Years Are Not Permitted In The Hot Tub

WARNING

Do Not Use Hot Tub While Under The Influence of Alcohol, Tranquilisers Or Any Other Drugs That May Cause Drowsiness Or That Raise Or Lower Blood Pressure



Do Not Enter If Temperature Is Over 40°C



Enter & Exit The Hot Tub Slowly

CAUTION

If You Have Long Hair Please Tie It Up Or Wear A Swimming Cap (Don't Worry You'll Still Look Cool!)



Children Must Be Supervised At All Times



No Glassware Allowed In Or Near The Hot Tub



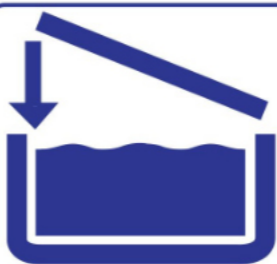
Please Do Not Use Soap Or Sun Lotions In The Hot Tub



Please No Jumping Or Diving. (Hot Tubs Are Not That Deep!)



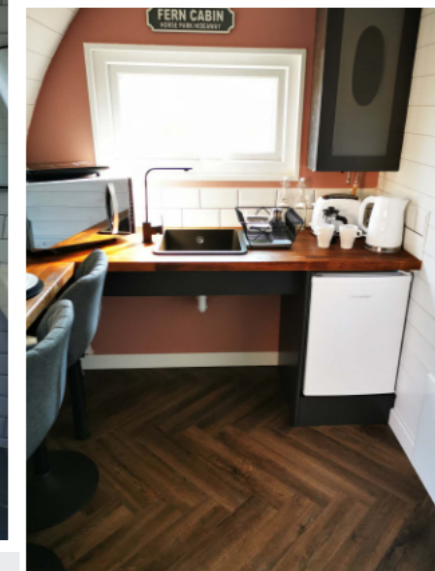
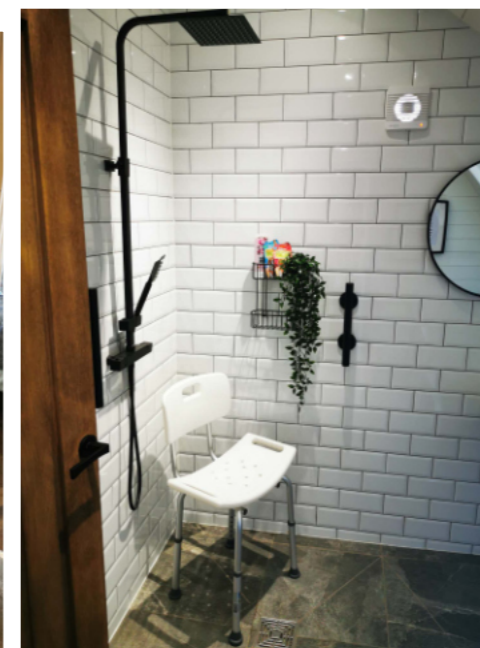
Limit Your Soak to 15 Minutes, & Cool Off Before Re-Entering



Please Replace Spa Cover After Using The Hot Tub



Please Do Not Sit Or Lie Down On The Spa Cover



ACCESSIBILITY

HORSE PARK HIDEAWAY IS FOR EVERY ONE AND ANYONE TO ENJOY!

FERN CABIN HAS A PARKING SPACE RIGHT OUTSIDE THE CABIN WITH RAMP ACCESS TO THE FRONT DOOR. ALL DOORS ARE WIDE ENOUGH FOR WHEELCHAIR USERS. ALL WORKTOP HEIGHTS ARE LOWER FOR YOUR COMFORT WITHOUT CUPBOARDS UNDERNEATH FOR EASE OF ACCESS. LIGHT SWITCHES AND PLUG SOCKETS ARE ALL ON AN ACCESSIBLE LEVEL TOO. THE WET ROOM IS MADE SPECIFICALLY WITH A WHEELCHAIR USER IN MIND, IT HAS GRAB BARS TO HELP WITH THE USE OF THE TOILET AND SHOWER AND A SINK AT AN ACCESSIBLE HEIGHT. A SHOWER CHAIR IS AVAILABLE FOR YOUR USE. THE HOT TUB HAS BEEN SUNK INTO THE DECKING SO THAT IT IS EASIER FOR EVERYONE TO USE.

IF YOU HAVE A VISUAL IMPAIRMENT WE HAVE MADE SURE THAT DOOR FRAMES, LIGHT SWITCHES AND SOCKETS ARE EASILY VISIBLE AND ENSURED THERE ARE NO TRIP HAZARDS. LARGE PRINT INFORMATION IS AVAILABLE. IF YOU HAVE ONE WE VERY MUCH WELCOME AND ENCOURAGE YOU TO BRING YOUR WONDERFUL GUIDE DOGS. WE HAVE INSTALLED STROBE LIGHT HEAT DETECTORS AS WELL AS SOUND ONES FOR THOSE FOR HAVE A HEARING IMPAIRMENT.

WE HAVE A SENSORY STORY, DOOR AND CUPBOARD GUARDS, PLASTIC KITCHEN CROCKERY, AND A SENSORY BOX AVAILABLE TO ANYONE WITH AUTISM THAT MAY WISH TO USE ANY OF THESE DURING THEIR STAY. THERE IS A LOCKABLE GATE ON THE DECKING SO YOU CAN RELAX KNOWING YOUR LITTLE ONES CAN'T ESCAPE. IF YOUR CHILD HAS AUTISM OR ANY ADDITIONAL NEEDS AND YOU REQUIRE ANYTHING ELSE TO MAKE YOUR STAY THAT LITTLE BIT EASIER WE WILL TRY AND HELP YOU IN ANYWAY WE CAN. IF YOU HAVE ANY QUESTIONS OR QUERIES RELATING TO THE ACCESSIBILITY OF HORSE PARK HIDEAWAY PLEASE GET IN TOUCH WE WANT TO HELP IN ANYWAY WE CAN. OR IF YOU WANT TO COME LOOK AROUND THE CABIN BEFORE YOU BOOK YOU ARE MORE THAN WELCOME TO.



Please Review your Stay!!

We would love you to review your stay. You can do this on any of our social media pages or or google.

As a thank you for staying with us and reviewing your stay we would like to offer you 15% off your next visit. Once you have reviewed us get in touch for your 15%off voucher!

- There is a dyke that runs round the edge of the field. This is there to collect excess water off the field to reduce flooding. In summer it is usually empty but during winter it can get quite full. We ask that you please respect all signs and do not cross the roped off area near the dyke. Children need to be supervised at all times!

- Unless leaving the site please keep to the grounds enclosed in the fenced off area and do not go wandering:)

- The outdoor sofa cushions and outdoor games are in the outdoor storage box, please put all cushions back in the box or in the cabin with you over night. They take ages to dry if they get wet



Bell Tent Cinema Instructions

If you have booked the cinema package please follow these instructions.

- The projector is set up to give you the best view, please do not move it or adjust any of the settings.
- Plug the plug into the extension lead that is just inside the bell tent door. This will turn the projector, the dvd player, the speaker and the fairy lights on.
- If the speaker doesn't turn on, just turn it off and on again using the switch on the back.
- Use the controller to turn the projector on. When you press the on button it will automatically connect to the DVD player or the fire stick. To change between them press source on the white projector controller and change from hdmi 1 and hdmi 2
- Everything is plugged in how it should be, don't unplug any wires.
- The DVD player will only play DVD discs not blue ray please only use DVDs.
- Please unplpug the from the extension lead before leaving the bell tent
- The electric log burner has buttons on the right hand side at the bottom. There is 2heat settings, a fan and just alight. Choose the setting you desire but make sure it is turned off after.



FURTHER INFORMATION

Further information is available on our Website
www.horseparkhideaway.co.uk

If there is anything else you need information about please don't hesitate to get in touch via the contact details above.